

Newark Evidence

Q215

44-38861

"Murkin"

CR

1 lat. fingerprint,
P elim

photo # 72

44-38861

LC 91075

✓

1813

23



2025 RELEASE UNDER E.O. 14176

72
white envelope, Q215
to Locksmithing Institute



2025 RELEASE UNDER E.O. 14176

LC 91075
44-38861

2025 RELEASE UNDER E.O. 14176

44-38861 JK Q215



2025 RELEASE UNDER E.O. 14176

Newark Evidence

Q 254 - Envelope
Q 253 - "

"Murkin"
CR

44-38861

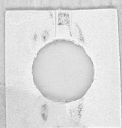
LC 91075

4 lat. prints (2 specim)

photos 97-89



44-38861



SPW

71

ATLANTA
APR 17
P M
1968
GA.

9254 (ENCLOSURE)
LC 91075
CASE NO.
U. S. DEPARTMENT OF JUSTICE
FEDERAL BUREAU OF INVESTIGATION

ONE INCH
0

87

Q254 - Envelope from
Locksmithing Institute (back)
(post mark 4/10/68, Little Falls, N.J.)

LC 91075

44-38861

88

OVE
Add



George Lloyd Dimes



Q 253 (ENVELOPE)

CASE NO. LC 91075

U. S. DEPARTMENT OF JUSTICE

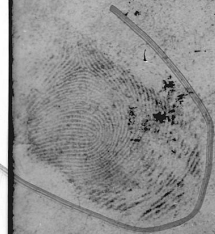
88

Q253 - Envelope from
Locksmithing Institute (front
postmark 4/9/68, Little Falls, N.J.)

LC 91075

44-38861

ATLANTA
APR 17
P M
1968
GA.



FEDERAL BUREAU OF INVESTIGATION
U. S. DEPARTMENT OF JUSTICE
CASE NO. LC 91075
Q 253 (ENVELOPE)

89

Q253

Envelope from
Locksmithing Institute
(back) post marked

4/9/68 Little Fall, N.J.

LC 91075

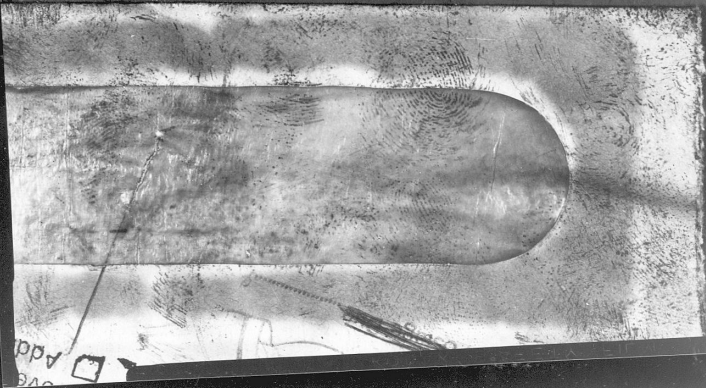
44-38861

FEDERAL BUREAU OF INVESTIGATION

U. S. DEPARTMENT OF JUSTICE

CASE NO. LC 91075

Q 253 (ENVELOPE)



2025 RELEASE UNDER E.O. 14176