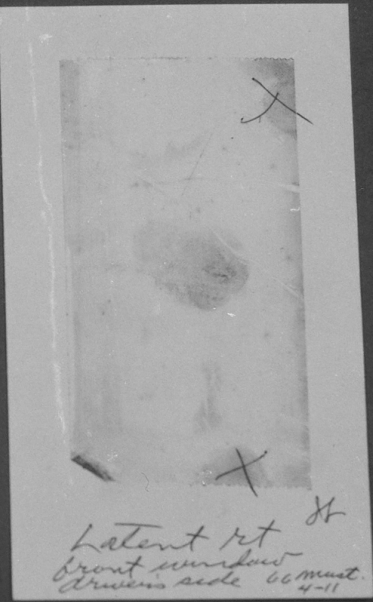
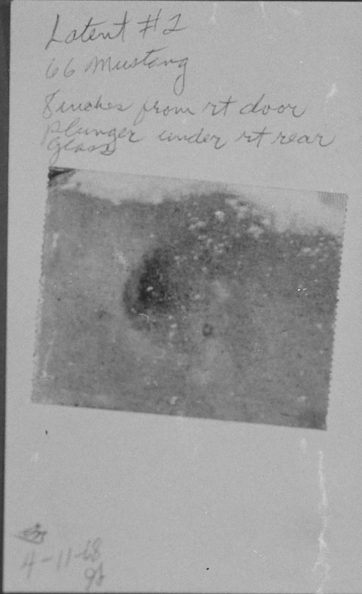
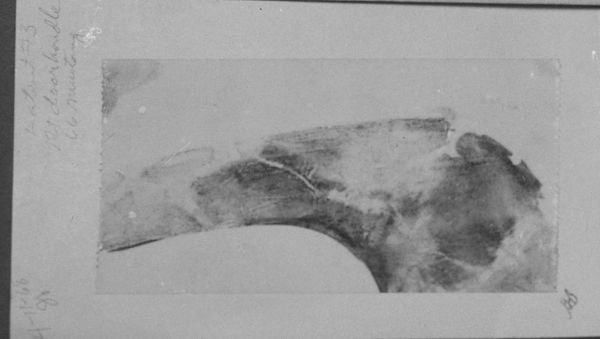


0 ONE INCH 1
FEDERAL BUREAU OF INVESTIGATION
U. S. DEPARTMENT OF JUSTICE
CASE NO.
LC 791075
Lifts

As pms msc
FBI
LABORATORY

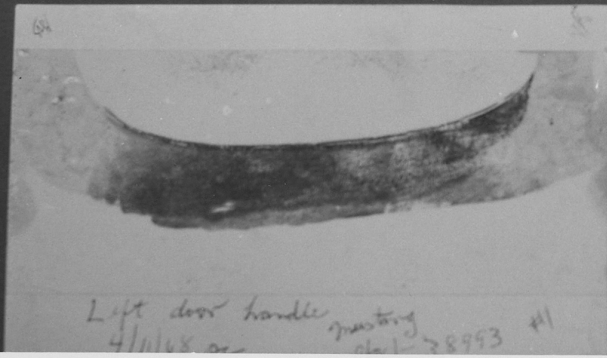
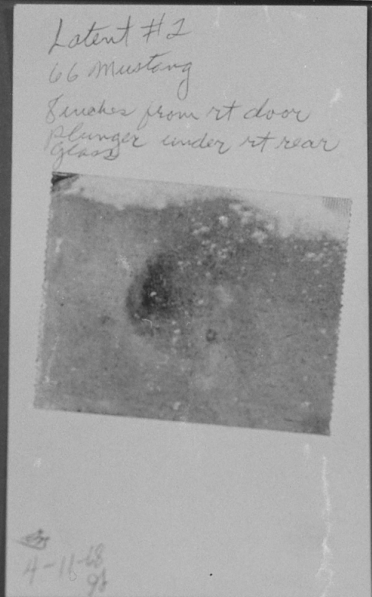
MSC
PMS
4 LIFTS
item 2



0 ONE INCH 1
FEDERAL BUREAU OF INVESTIGATION
U. S. DEPARTMENT OF JUSTICE
CASE NO.
LC 91675
Lifts

MS PMS MSC
FBI
LABORATORY

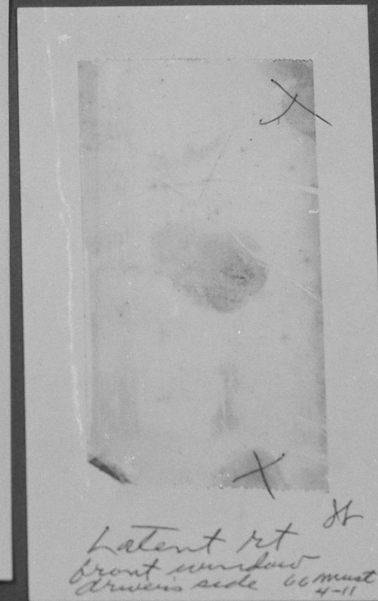
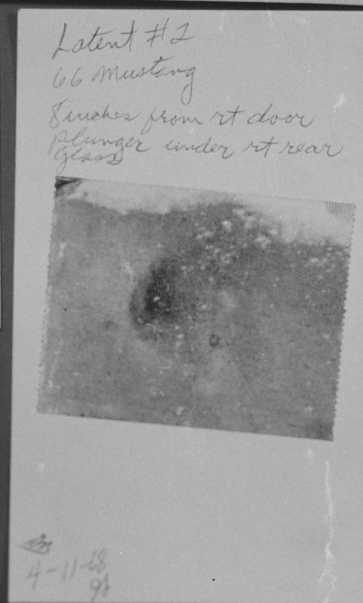
MSC
PMS
4 LIFTS
item 2



0 ONE INCH 1
FEDERAL BUREAU OF INVESTIGATION
U. S. DEPARTMENT OF JUSTICE
CASE NO.
LC 9075
Lifts

MS PMS MSC
FBI
LABORATORY

MSC
PMS
4 LIFTS
item 2



REGULAR 18-POINT TYPE

REGULAR 18-POINT TYPE

NARROW 18-POINT TYPE

NARROW 15-POINT TYPE

REGULAR 15-POINT TYPE

NARROW 15-POINT TYPE

44-38861 JK K34
FBI
LABORATORY



44-38861 JK K33
FBI
LABORATORY

REGULAR 18-POINT TYPE

REGULAR 18-POINT TYPE

NARROW 18-POINT TYPE

NARROW 15-POINT TYPE

REGULAR 15-POINT TYPE

NARROW 15-POINT TYPE

44-38861 JK K34

FBI

LABORATORY



44-38861 JK K33

FBI

LABORATORY

MS 100 1150
FBI
LABORATORY



4-11-68 - News #
66 white Mustang
① 67 Ala Tag # 1A 88354
On Rear deck Rt. inside of car -
msc
P 7 Miles

FBI
LABORATORY



4-11-68 - Iowa #
66 white Mustang
① 67 Ala Tag # 1A 8834.
On Rear dash Rt. inside of car -
a F. Miller

FBI
LABORATORY



4-11-68 - Iowa #

66 white Mustang

167 Ala Tag # 1A 8834

On Rear dash Rt. inside of car -

50
a 7 Miles

FBI
LABORATORY



4-11-68 - Iowa #
66 white Mustang
① 67 Ala Tag # 1A 8834
On Rear dash Rt. inside of car -
A F Miller

66 White Mustang - Item # 4/11/68
Ala Tag 68 - 1-38 993 MSC
on car when recovered PMS
@ F. Wiley

A/S PMS MSC
FBI
LABORATORY



66 White Mustang - Serial 4/11/68
Ala Tag 68 - 1-38 993
on car when recovered
@ 7 Miles
MSC
PMS

A/S PMS MSC
FBI
LABORATORY



66 White Mustang - Serial 4/11/68
Ala Tag 68 - 1-38 993
on car when recovered
@ 7 Mile
MSC
PMS

A/S PMS MSC
FBI
LABORATORY



W. White Mustang - Serial 4/11/68
Ala Tag 68 - 1-38 993
on car when recovered
@ F. Wiley

MSC
PMS

A/S PMS MSC
FBI
LABORATORY



66 White Mustang - Steved 4/11/68
Ala Tag 68 - 1-38 993
SW car when recovered
@ 7 Mile

MSC
PMS

A/S PMS MSC
FBI
LABORATORY



60 White Mustang - New 4/11/68
Ala Tag 68 - 1-38993
on car when recovered
@ F. Wiley

MSC
PMS

A/S PMS MSC
FBI
LABORATORY



Ms 103 112
FBI
LABORATORY



4-11-68 - Steve H
66 white Mustang
① 67 Ala Tag # 1A 88354
On Rear dash Rt. inside of car -
R 7 Miles

Q/S PMS 1120
FBI
LABORATORY



4-11-68 - Iowa #
66 white Mustang
① 67 Ala Tag # 1A 88354
On Rear dash Rt. inside of car -
m5c
P 7 Miles

Ms 105 1150
FBI
LABORATORY



4-11-68 - Iowa #
66 white Mustang
① 67 Ala Tag # 1A 88354
On Rear dash Rt. inside of car -
msc
R F Miller



MSC
PMS
1 Mirror
66 Mustang
4-11-68
JH

P/S PMS MSC
FBI
LABORATORY

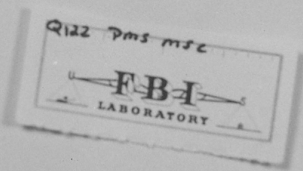
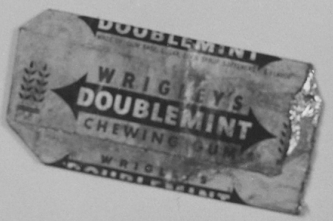
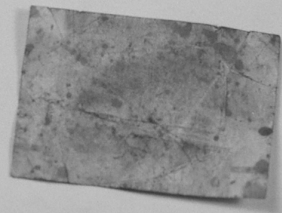
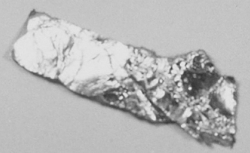
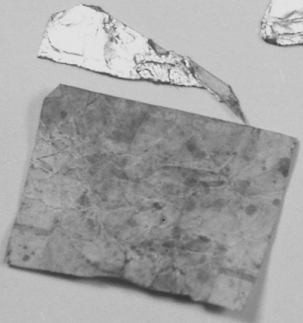
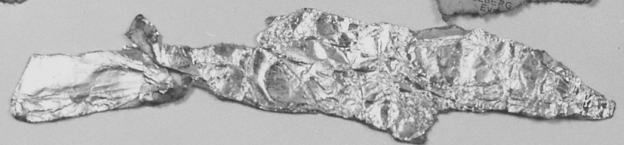


2572 WILLOW
WRIGHTWOOD
New Contemporary
Level 22, 1013 Br., P.L.S. 9155
park & carpeting & all kitchen bil-
LE
FOR THE 2005-4 access
back of house for baseball
Lake & Indiana
12621 MILBANK
3. DEN, 3 BA., POOL
PREM SUN. Be in by Xmas! N. of
Neorpark in Winton 844-950
4 BR., ATRIUM, POOL
Private Mod. Heathland Rd. Lev. rty.
Big Brk. 4th. Coll. Dressed. Re-
served. Air. 46,750 10% dn. N.H.
CARLTON SWAN Realty SJ 8-7431
Norman Oaks

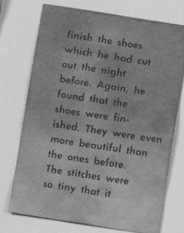
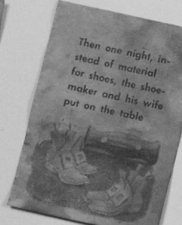
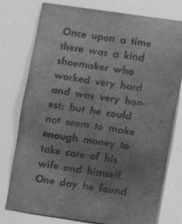
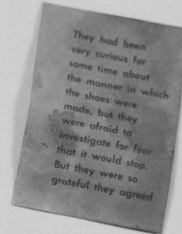
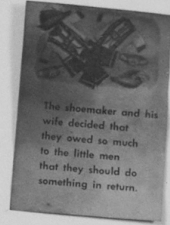
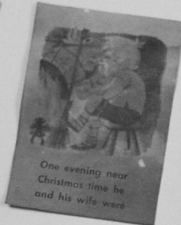
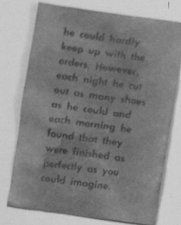
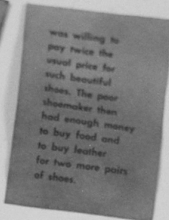
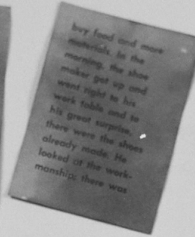
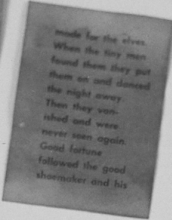
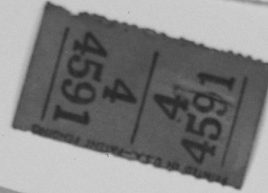
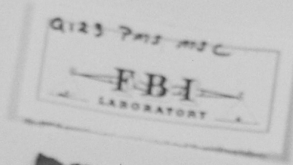
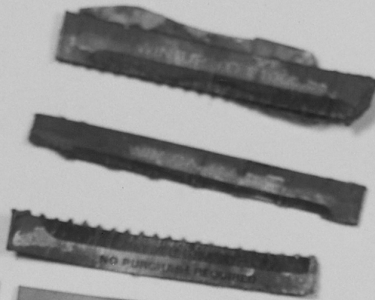
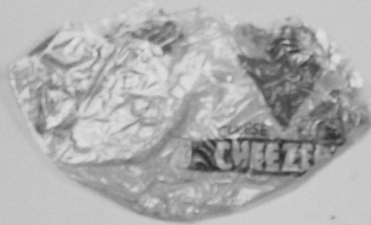
COMPANY
AUCTIONEERS/REALTORS
1012 S. HILL, OCEANSIDE
OCEANFRONT
HIDEAWAY
White Surf breaking over rocks
2m ft. white sandy beach
Magnificent coastline view
Large living room & den
to terrace
PRIVATE ENTRY
Opening to Living Section
Nothing comparable in
Lewiston Beach at
\$12,000
LILLY HALLBERG

*Paper from
Glenbe Camp
66 Mustang
4-11-68
JH*

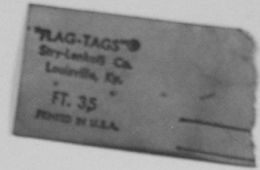
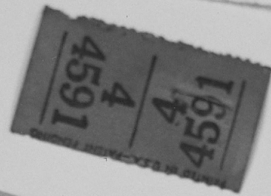
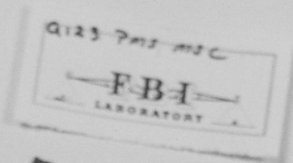
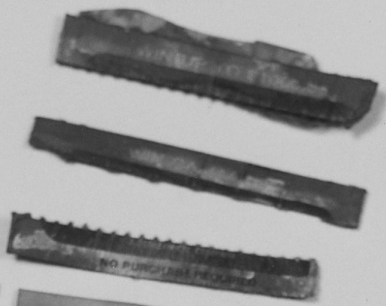
*Q122
PMS
MSE*







66 White Mustang 4-11-68 Q123
4 Paper Scraps (1-Elves and MS0
under back seat Shoe maker) PMS
JTB
4/11/68



made for the elves. When the tiny men found them they put them on and danced the night away. Then they were reborn and were never seen again. Good fortune followed the good shoemaker and his



They had used more materials in the morning, the shoe maker got up and went right to his work table and to his great surprise, there were the shoes already made. He looked at the workmanship, there was

was willing to pay twice the usual price for such beautiful shoes. The poor shoemaker then had enough money to buy food and to buy leather for two more pairs of shoes.



he could hardly keep up with the orders. However, each night he cut out as many shoes as he could and each morning he found that they were finished as perfectly as you could imagine.



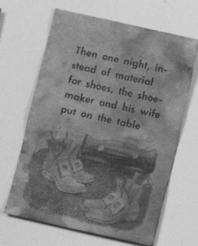
As soon as the clock struck midnight, in came two ragged tiny elves; they jumped on the shoemaker's

for the better. In the morning, after breakfast, the shoemaker went to his table to

The shoemaker and his wife decided that they owed so much to the little men that they should do something in return.

They had been very curious for some time about the manner in which the shoes were made, but they were afraid to investigate for fear that it would stop. But they were so grateful they agreed

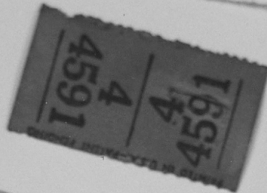
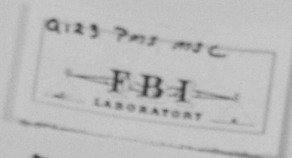
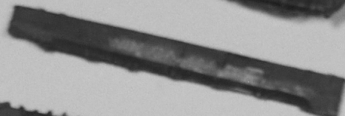
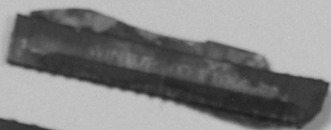
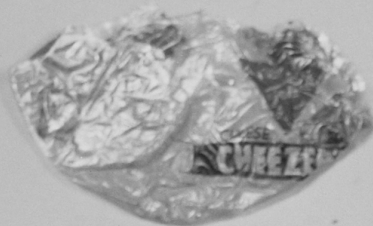
Once upon a time there was a kind shoemaker who worked very hard and was very honest; but he could not seem to make enough money to take care of his wife and himself. One day he found



finish the shoes which he had cut out the night before. Again, he found that the shoes were finished. They were even more beautiful than the ones before. The stitches were so tiny that it



4-11-68 Q123 MS-C PMS
66 White Mustang
4 Paper Scraps (1-Elves and under back seat Shoemaker)
JTB
White



made for the elves.
When the tiny men
found them they put
them on and danced
the night away.
Then they van-
ished and were
never seen again.
Good fortune
followed the good
shoemaker and his

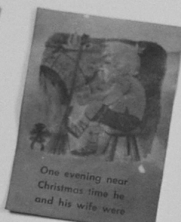


buy food and more
materials. In the
morning, the shoe-
maker got up and
went right to his
work table and to
his great surprise,
there were the shoes
already made. He
looked at the work-
manship, there was

was willing to
pay twice the
usual price for
each beautiful
shoe. The poor
shoemaker then
had enough money
to buy food and
to buy leather
for two more pairs
of shoes.



he could hardly
keep up with the
orders. However,
each night he cut
out as many shoes
as he could and
each morning he
found that they
were finished as
perfectly as you
could imagine.



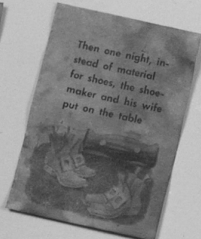
As soon as the clock
struck midnight, in
came two ragged tiny
elves. They jumped
on the shoemaker's

for the better.
In the morning,
after breakfast,
the shoemaker went
to his table to

The shoemaker and his
wife decided that
they owed so much
to the little men
that they should do
something in return.

They had been
very curious for
some time about
the manner in which
the shoes were
made, but they
were afraid to
investigate for fear
that it would stop.
But they were so
grateful they agreed

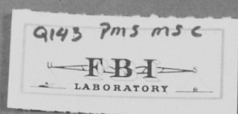
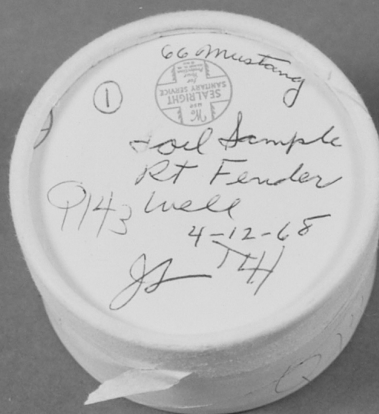
Once upon a time
there was a kind
shoemaker who
worked very hard
and was very hon-
est. But he could
not seem to make
enough money to
take care of his
wife and himself.
One day he found

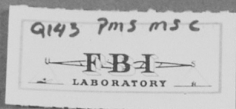
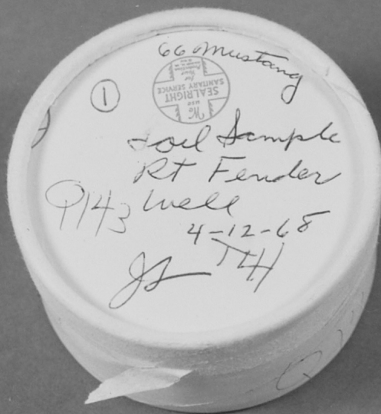


finish the shoes
which he had cut
out the night
before. Again, he
found that the
shoes were fin-
ished. They were even
more beautiful than
the ones before.
The stitches were
so tiny that it



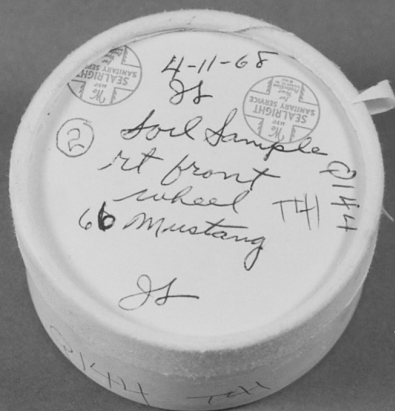
66 White Mustang
4 Paper Scraps (1-Elves and
under back seat Shoe maker
JTB
4/11/68
Q123
MSC
PMS





66 Mustang
①
Soil Sample
Rt Fender
Q143 well
4-12-68
JH TH

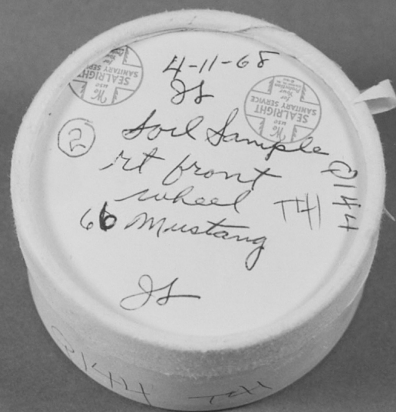
Q143 PMS MSC
FBI
LABORATORY



Q144 7ms msc
— FBI —
LABORATORY

4-11-68
JS
② Soil Sample
rt front wheel TH
66 Mustang TH
JS

Q144 7ms msc
FBI
LABORATORY



Q144 PMS MS 6
FBI
LABORATORY

Q145 PMS MSC
FBI
LABORATORY

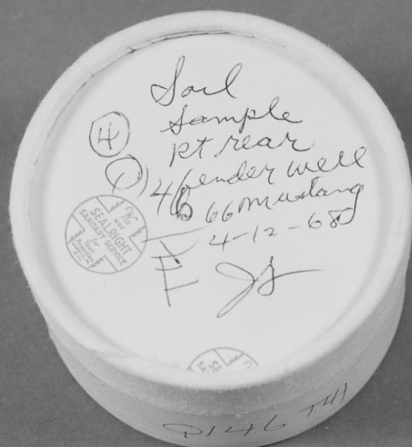
3 Soil sample
Tt rear wheel
7466 Mustang
4-12-68
JL

Q145 7015 MSC
FBI
LABORATORY

③ Soil sample
Tilt rear
wheel
M466 24 Mustang
4-16-68
JL

Q145 PMS MSC
FBI
LABORATORY

Soil
sample
③
TYP rear
wheel
74 Oldsmobile
4-12-68
JL



Q146 PMS MSC
FBI
LABORATORY

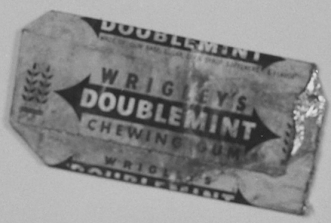
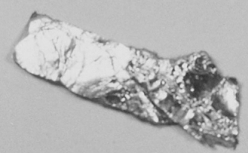
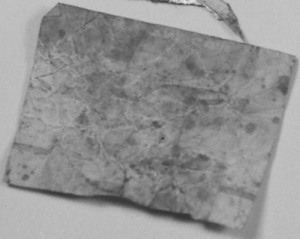
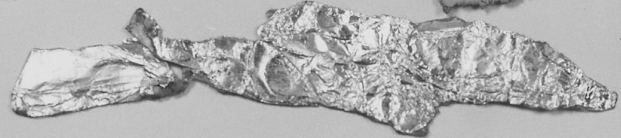


12621 MILBANK
 3 DEN, 3 BA, POOL
 OPEN SUN, Br in by Xmas, N. of
 4 BR., ATRIUM, POOL
 CARLTON SHAW Realty 37-87631
 German Oaks

COMPANY
 UCTIONEERS REALTORS
 012 S. HILL, OCEANSIDE
 OCEANFRONT
 HIDEAWAY
 White Surf & dunes over rocks
 on 1/2 mile to beach
 immaculate condition
 Large 1 1/2 room
 PRIVATE ENTRY, Gate
 South to Luan, enclosed PANG
 LAUNDRY ROOM AT
 KELLY HALLBERG

*Paper from
 Globe Comp
 66 Mustang
 4-11-68
 JJ*

*Q122
 PMS
 MSC*



Q122 PMS MSC
 FBI
 LABORATORY

Q112
MSC Perovna Super Stainless
PM5 double edge razor blade
located on dark board of white
mattress
JTB
4/11/68



Q112 PMS-MSC
FBI
LABORATORY

Q112
MSC Personna Super Stainless
PMS Double edge razor blade
located on dash board of white
Mustang
JTB
4/11/68



Q112 PMS-MSC
FBI
LABORATORY

Q112
MSC Personna Super Stainless
PMS Double edge razor blade
located on dash board of white
Mustang
JTB
4/11/68

