

44- HQ-38861

E5912

BULKY



44-HQ-38861-E5912

X DO NOT DESTROY
HISTORICAL VALUE
NATIONAL ARCHIVES

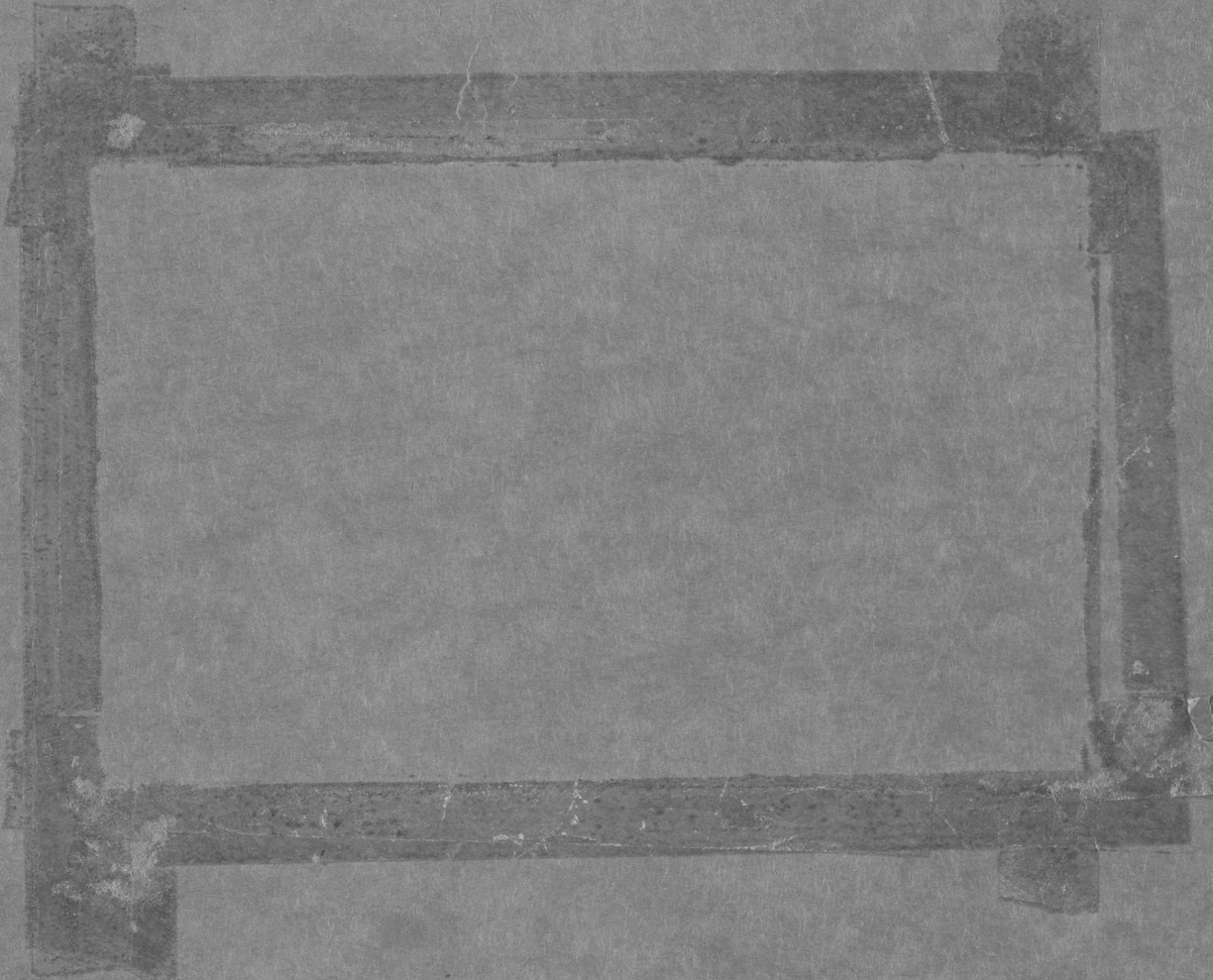
ATTENTION

BEFORE CHANGING CLASSIFICATION
OR PROCESSING ANY DOCUMENT
FROM THIS FILE FOR RELEASE TO
THE GENERAL PUBLIC, CONTACT
FOI/PA SECTION UNIT D, EXT. 5767.

FBI/DOJ

ENTIRE FILE REVIEWED
FOR HISTORICAL
DECLASSIFICATION

ALL INFORMATION CONTAINED
HEREIN IS UNCLASSIFIED
DATE 10/25/01 BY 91-ccc/mde



COPIED FOR
FOIPA
JUN 2 1977 BY R12

**GARNER'S ROOMING HOUSE
(Galt's Residence)
113 - 14th Street, N.E.**

**PIEDMONT-AMERICAN LAUNDRY
AND CLEANERS
1168 Peachtree Street, N.E.
(Galt left Laundry 4/1/68;
Picked up 4/5/68)**

**CAPITOL HOMES PROJECT
Parking Area 9
(Galt's car abandoned 4/5/68)
Connally Street and
Memorial Drive, S. E.**

SCALE - ONE INCH EQUALS APPROXIMATELY 0.63 MILES

Controlled Access Dual Highways
(Entrance and Exit only at Interchanges)

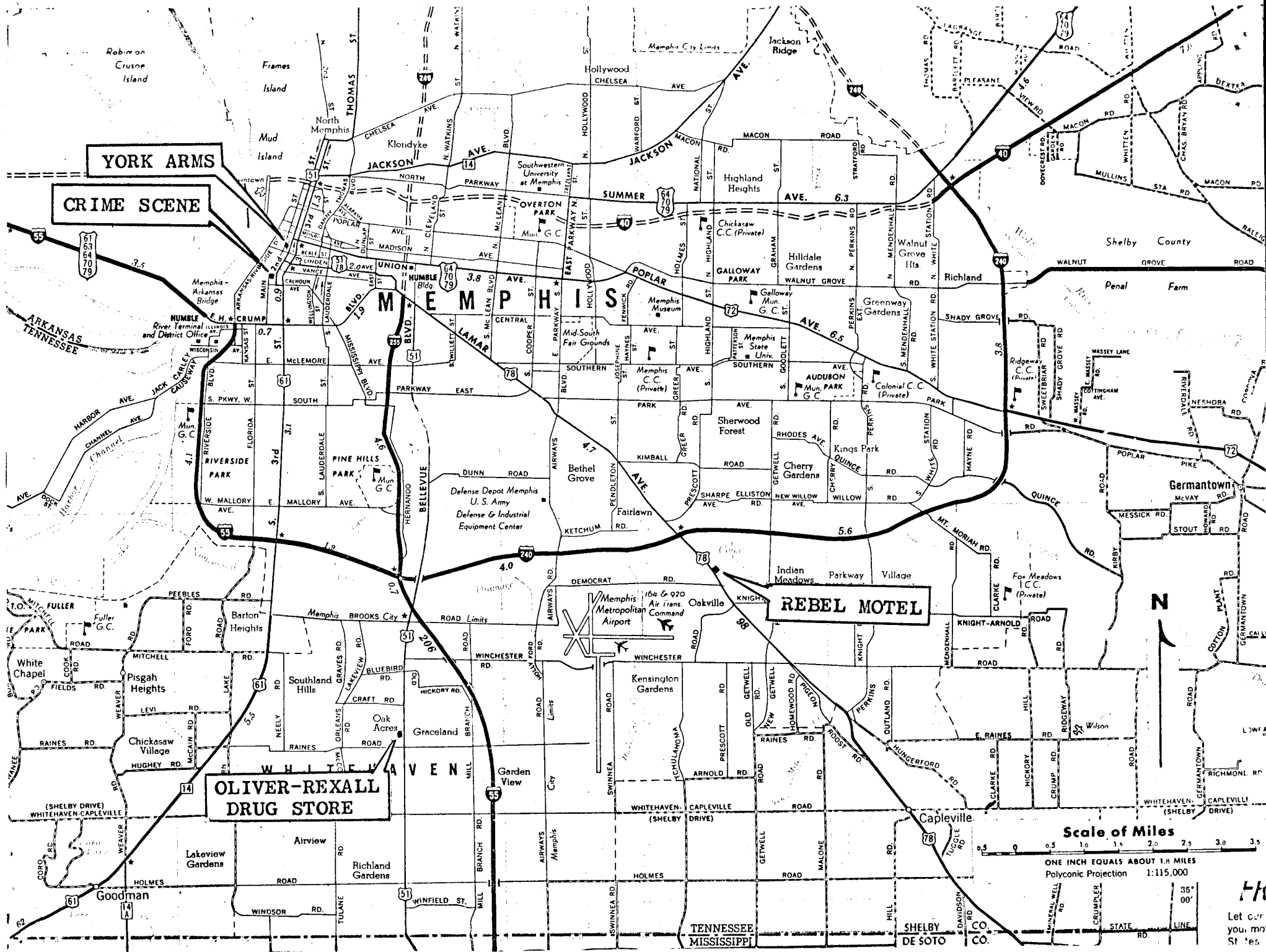
Other Dual Highways

way streets

Unimproved streets

71

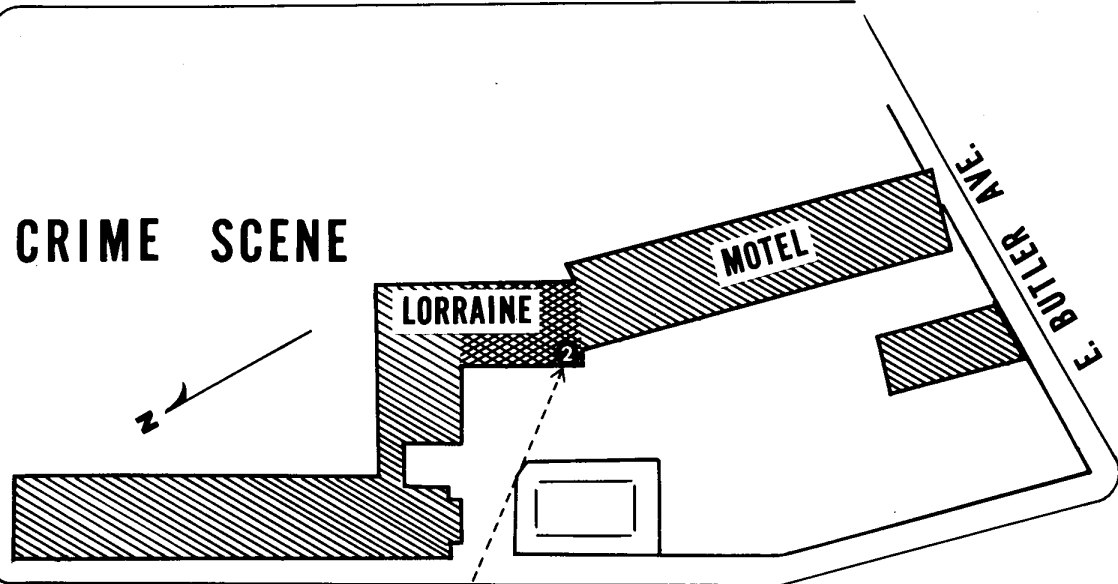
44-38861-5912



ITEM

Let our
you mol
St. es

7

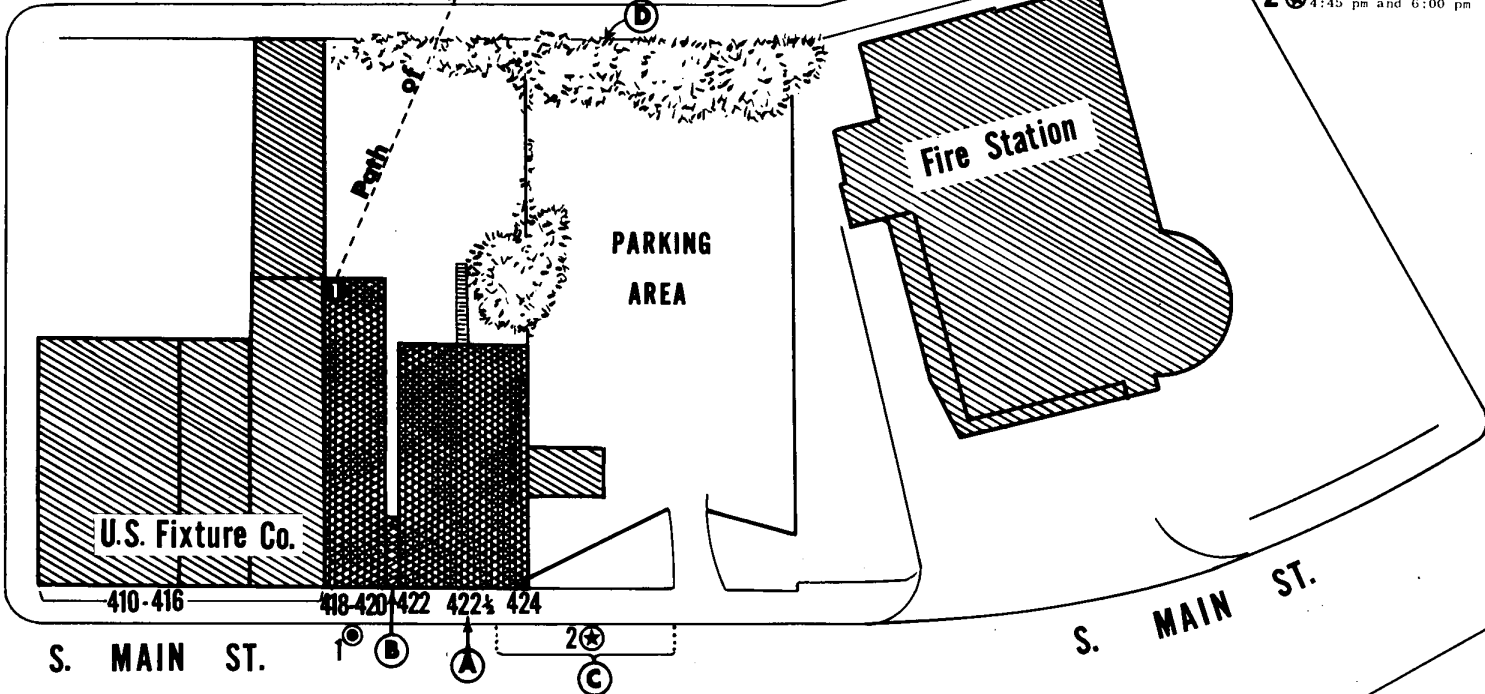


AVE.

MULBERRY

ST.

HULING



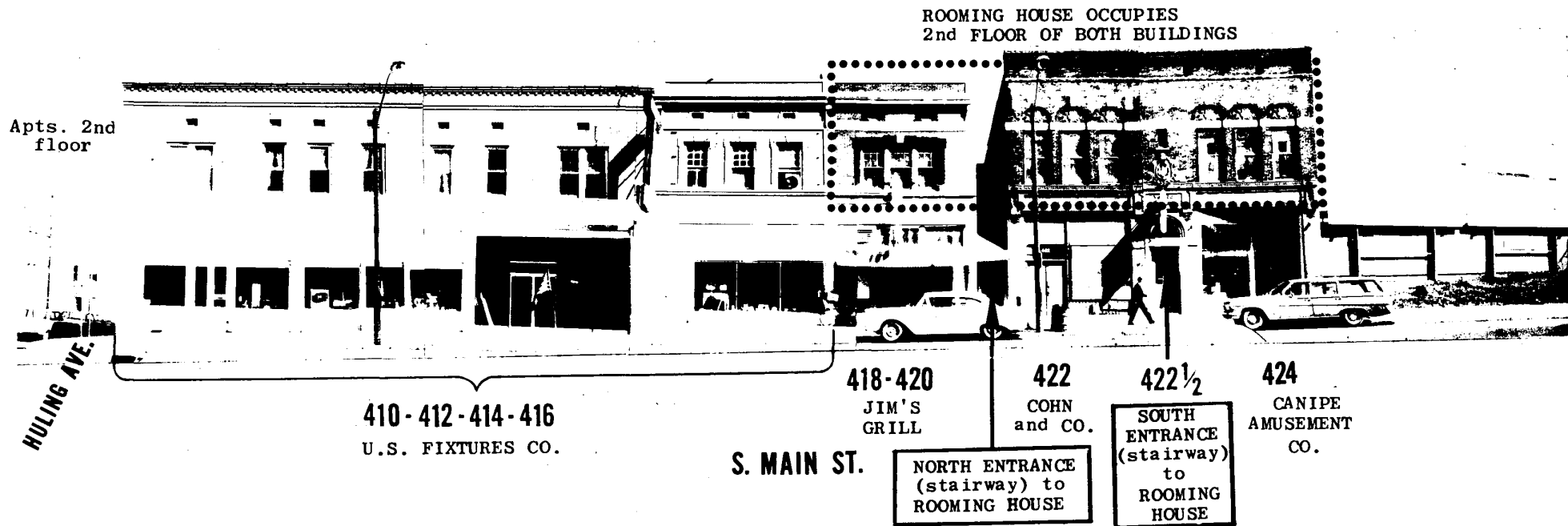
S. MAIN ST.

S. MAIN ST.

- ① Bathroom window, N. wing of rooming house
- ② Point where Dr. King was shot
- 424 - Canipe Amusement Co.
- Ⓐ 422½ - S. entrance (stairway) to rooming house, 2nd floor
- 422 - Cohn and Co.
- Ⓑ N. entrance (stairway) to rooming house, 2nd floor
- 420-418 - Jim's Grill
- Indicates 2nd floor area of rooming house from 418-424 with two entrances marked A and B
- Ⓒ Space for 3 cars between fire plug and driveway
- Ⓓ Concrete retainer wall
- 1⊙ White Mustang seen here about 4:00pm and later
- 2⊙ White Mustang seen here between approx. 4:45 pm and 6:00 pm

ITEM 6

9



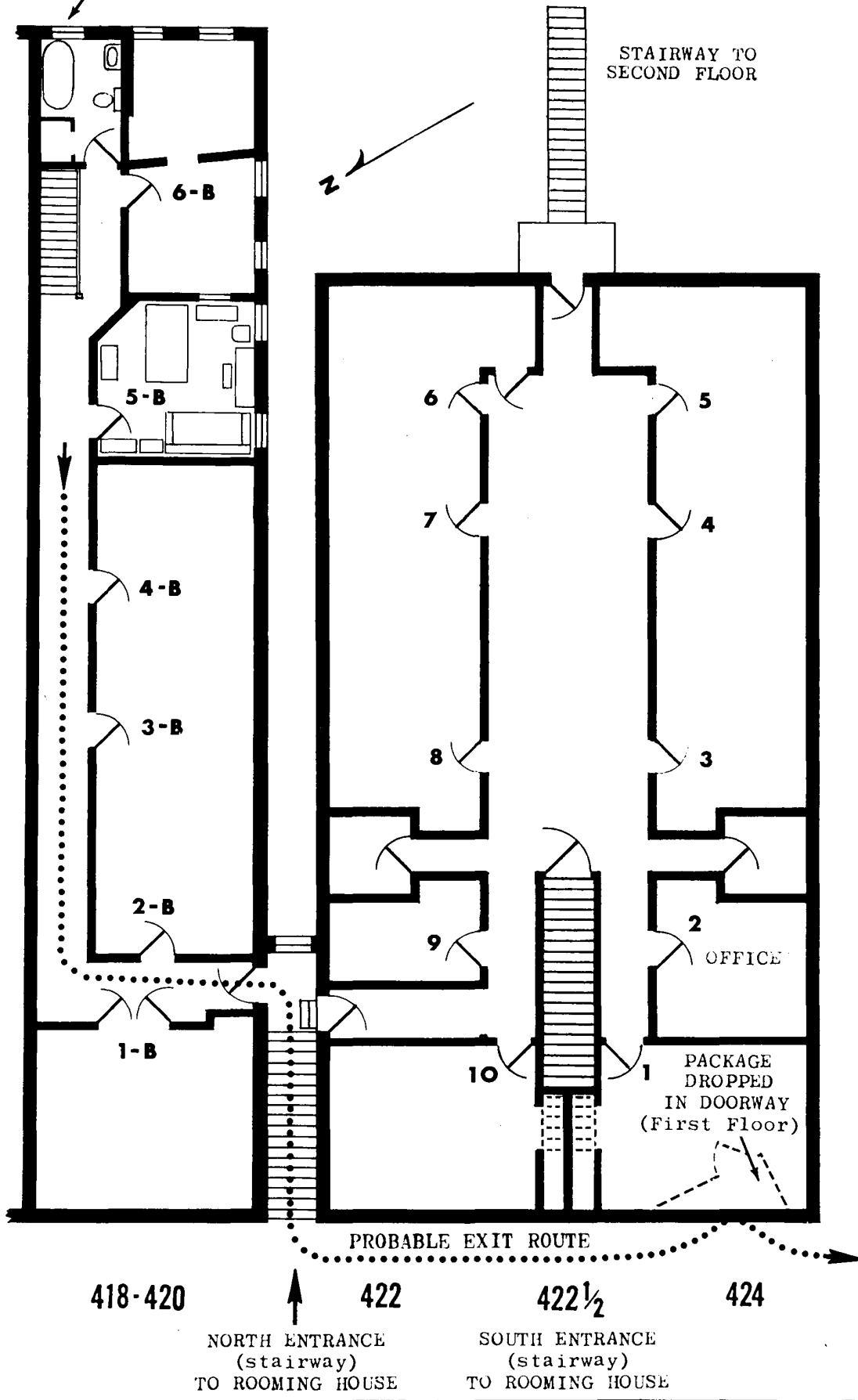
COMPOSITE PHOTO of
410-424 S. MAIN ST.

4

SECOND FLOOR PLAN of ROOMING HOUSE

BATHROOM WINDOW
FROM WHERE
SHOT WAS FIRED

STAIRWAY TO
SECOND FLOOR



S. MAIN ST.

Handwritten notes: 17-1-55

5

COMMUNICATIONS SET

14 ITEMS RE MEMO

DUNPHY TO CALLAHAN 4-22-68

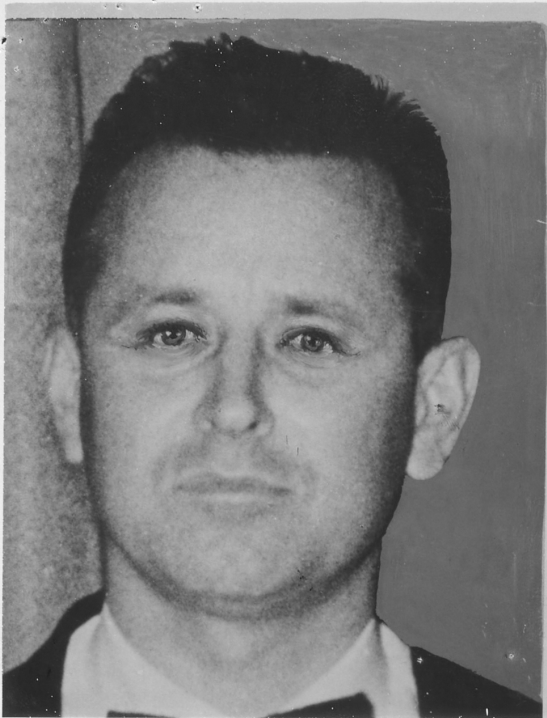


2025 RELEASE UNDER E.O. 14176

POLAROID

L751425

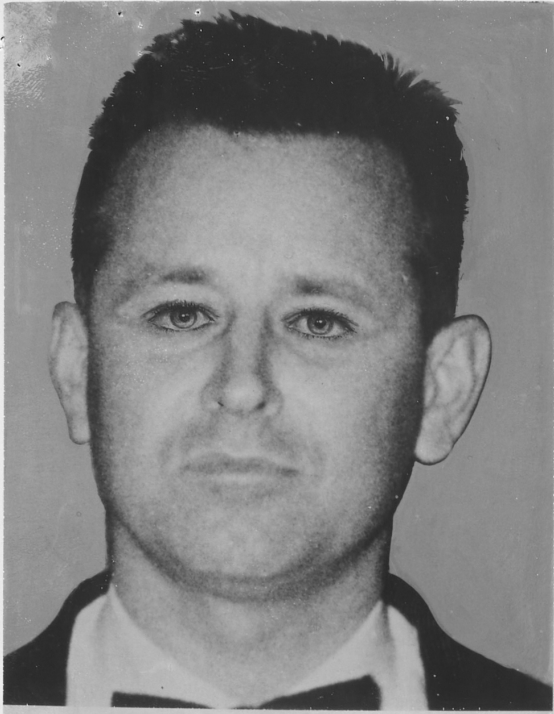
9



2025 RELEASE UNDER E.O. 14176

AT-4

13



2025 RELEASE UNDER E.O. 14176

AT-3

12

RECEIVED

SEP 1957

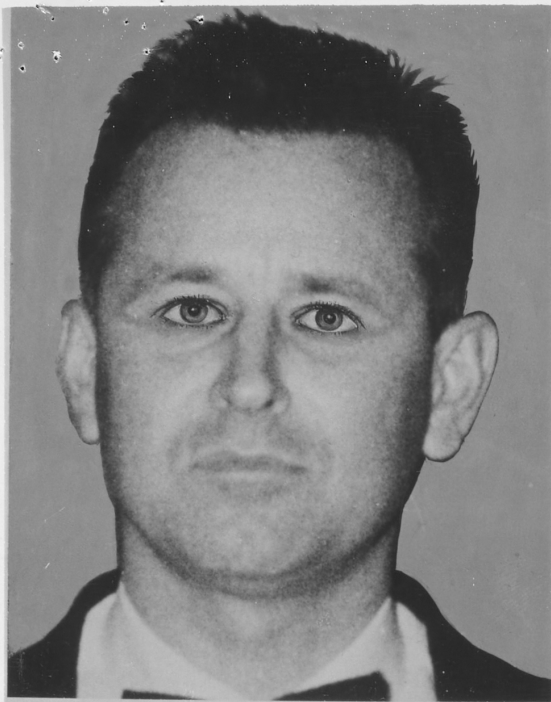
42



2025 RELEASE UNDER E.O. 14176

AT-2

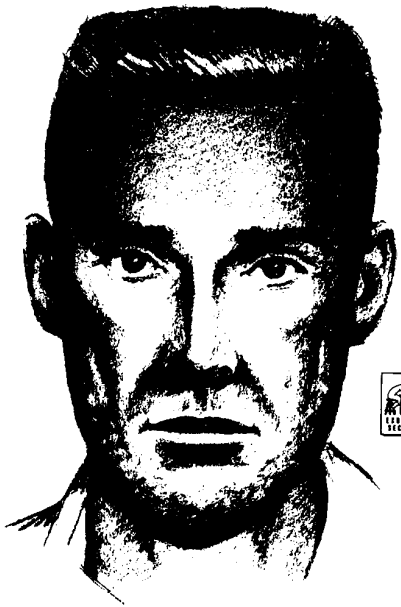
11



2025 RELEASE UNDER E.O. 14176

AT-1

16



BUR 44-38861 LA 44-1574 6-17-68

BUR 44-38861 LA 44-1574 6-17-68

Robert Arce

w.o.k.?
Comp 6/4/68
Res 6/17/68

Martin 44-38861
LA 44-1574

44-38861-5712

44-38861-5912



MUMFORD #1 MEMPHIS



?

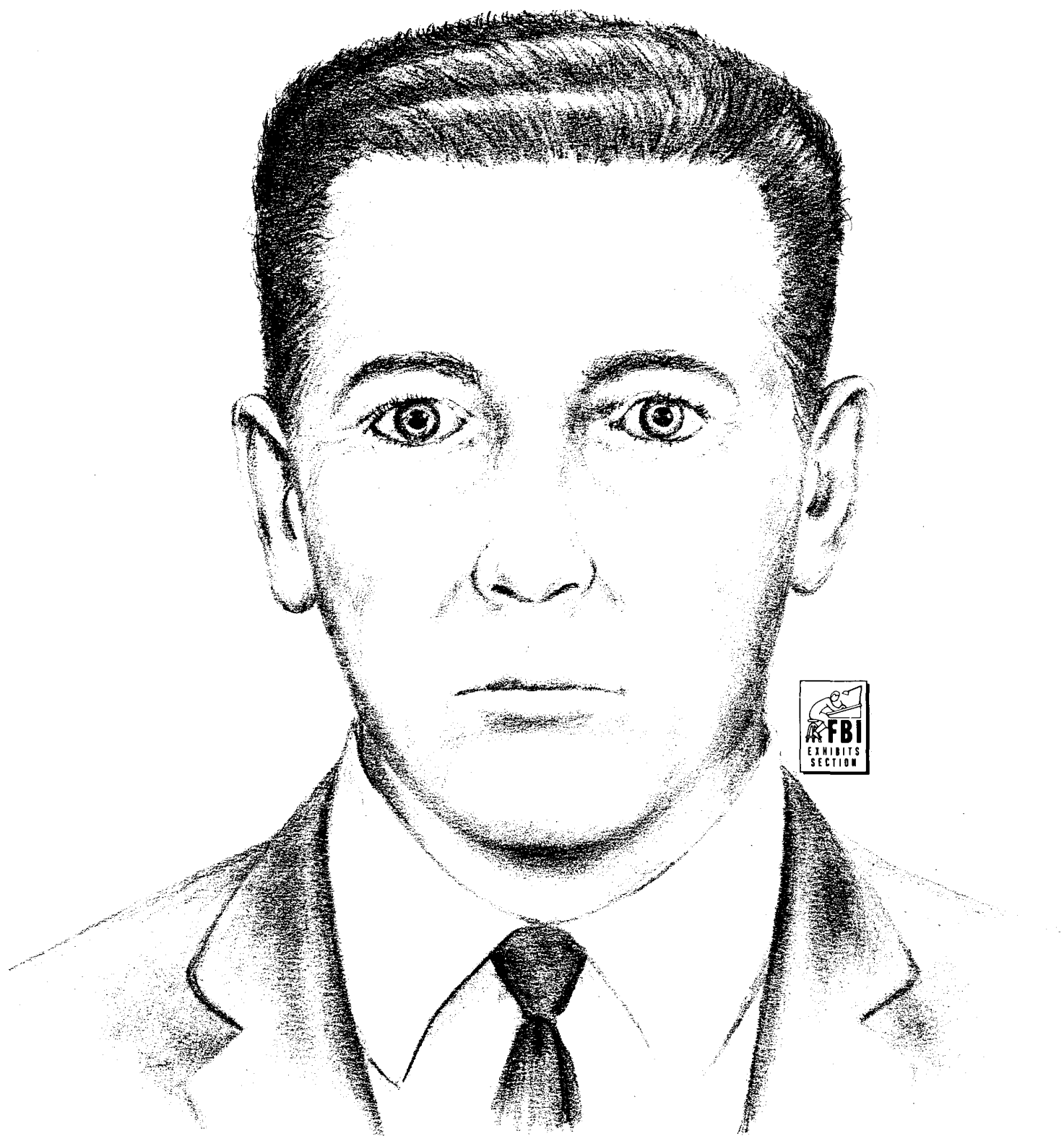


MUMFORD #2 BH

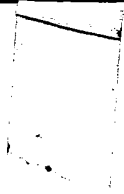
U.S. A.
14573
Sept. 8
4/15-17
1968



MUMFORD
MEMPHIS PD INFORMANT



44-38861-5912



3

BIRMINGHAM
MUNIFORD

REVISED -
HEAFNER -
BIRMINGHAM

Negative



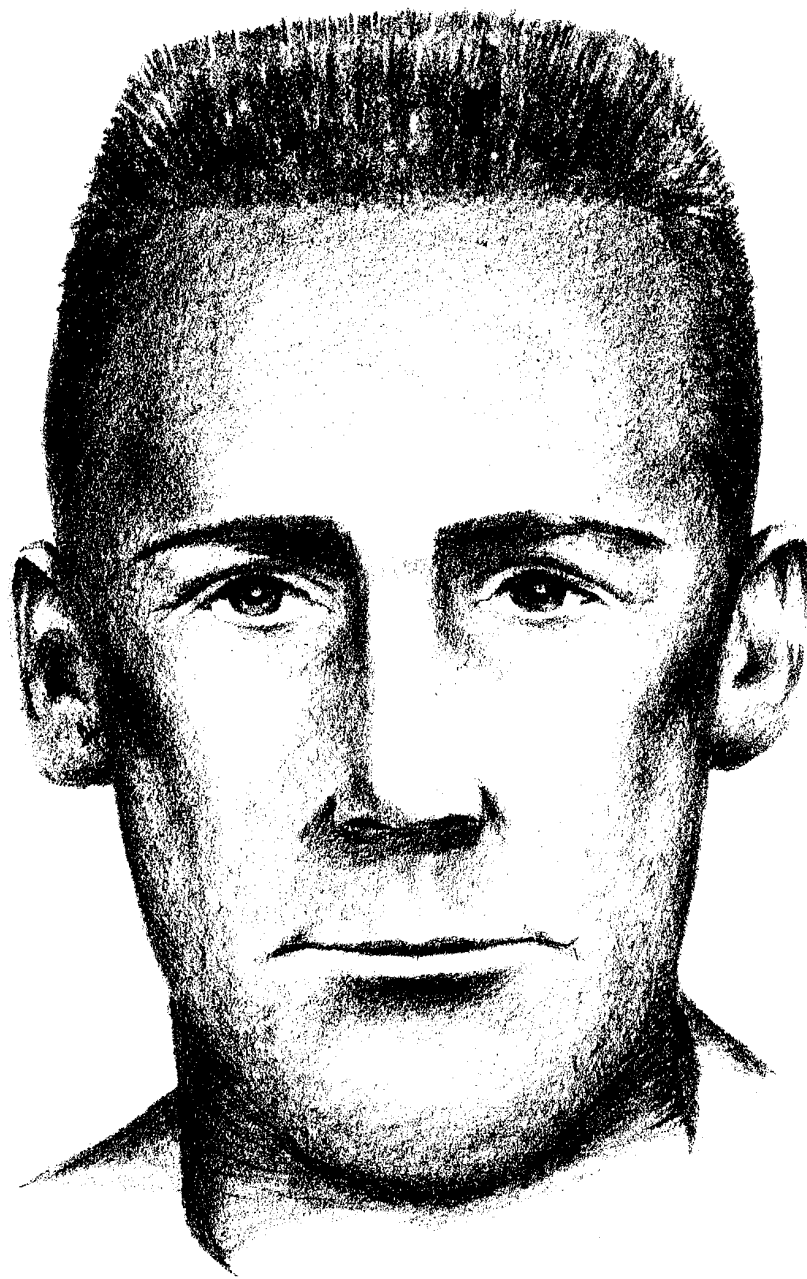
2025 RELEASE UNDER E.O. 14176



44-38861-5912

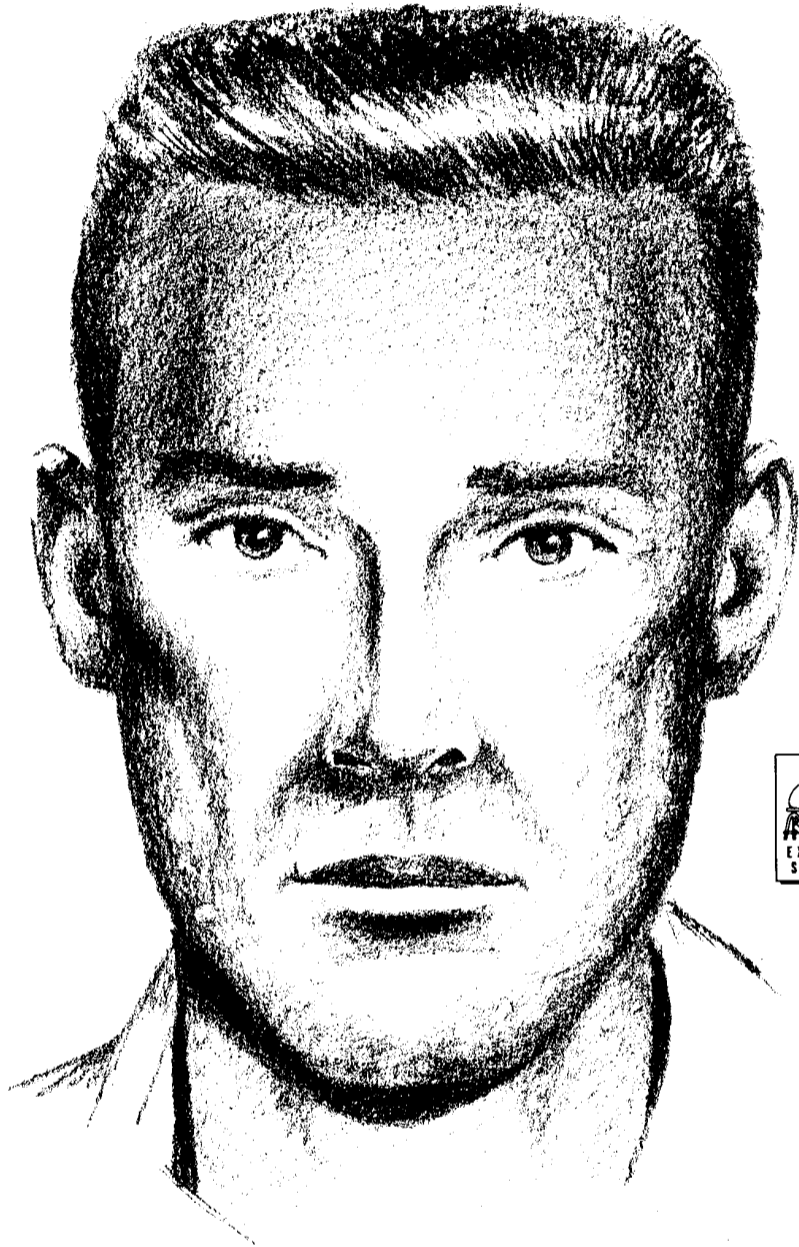
MUMFORD

11 1
MEMPHIS



BUR 44-38861 LA 44-1574 6-4-68

44-38861-5912



BUR 44-38861 LA 44-1574 6-17-68

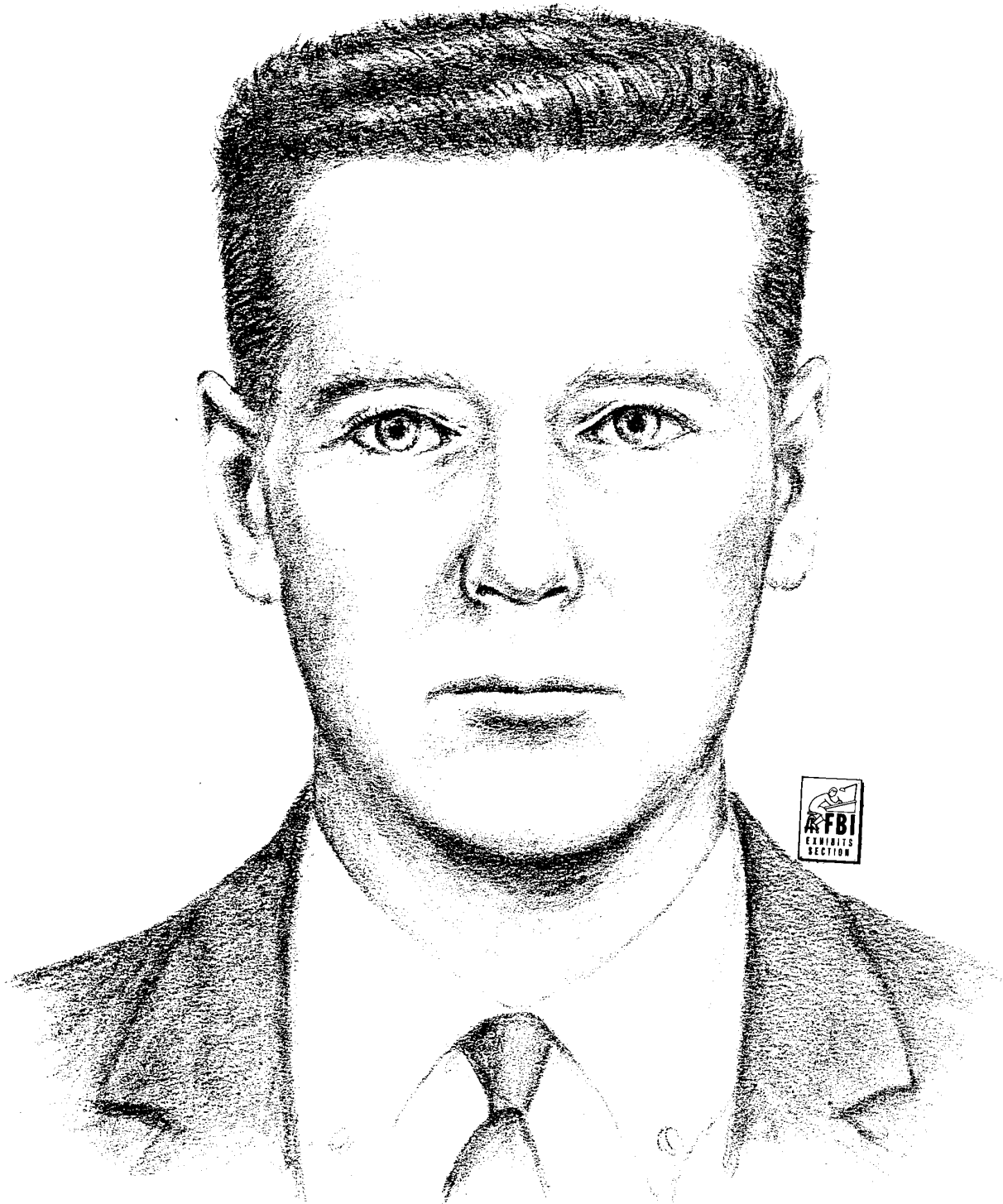
44-38861-5912



44-38861-5912

HE JANSER

MEMPHIS P.D.
INFORMANT



44-38861-5912

HEJENOR

2
BIA VETAM

**GARNER'S ROOMING HOUSE
(Galt's Residence)
113 - 14th Street, N.E.**

**PIEDMONT-AMERICAN LAUNDRY
AND CLEANERS
1168 Peachtree Street, N.E.
(Galt left Laundry 4/1/68;
Picked up 4/5/68)**

**CAPITOL HOMES PROJECT
Parking Area 9
(Galt's car abandoned 4/5/68)
Connally Street and
Memorial Drive, S. E.**

SCALE - ONE INCH EQUALS APPROXIMATELY 0.69 MILES

Controlled Access Dual Highways
(Entrance and Exit only at Interchanges)

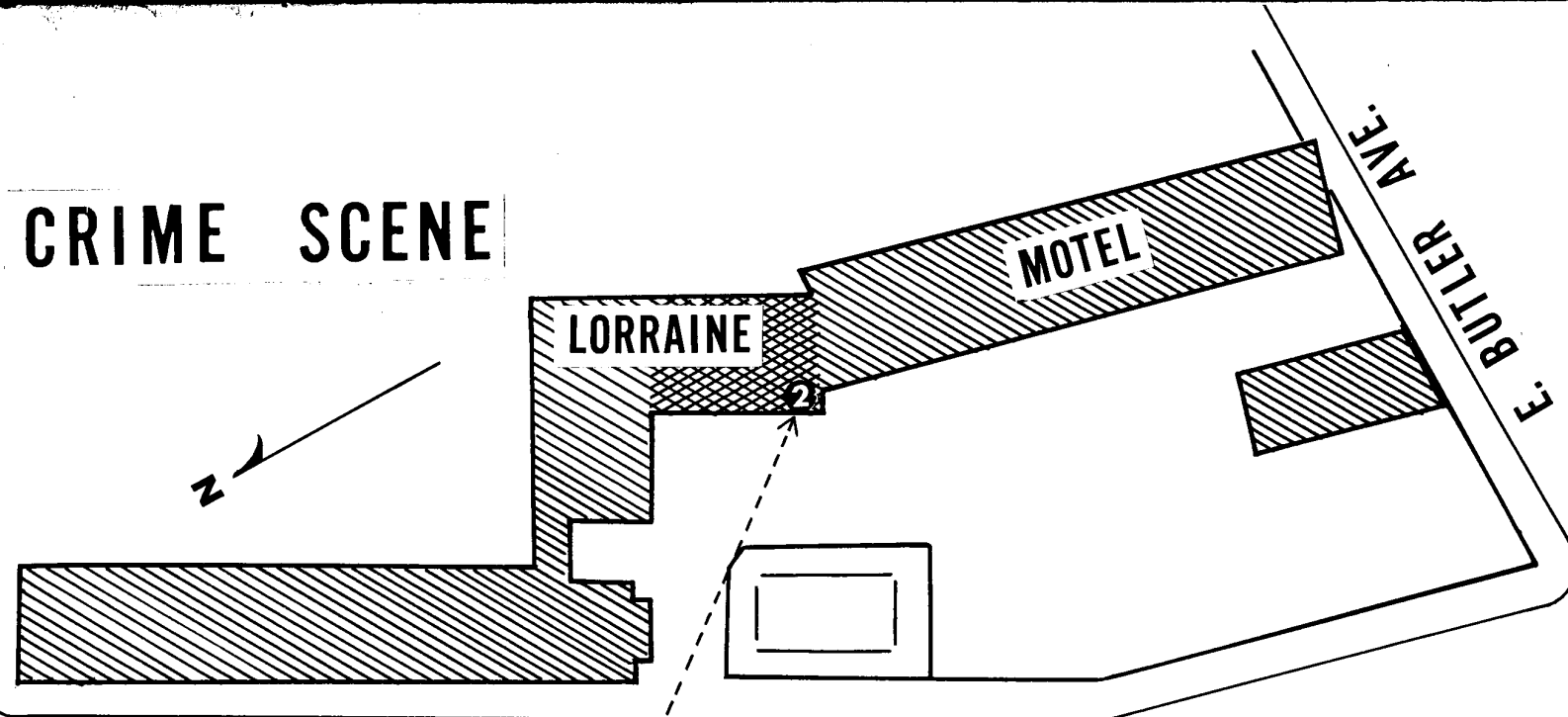
Other Dual Highways

One-way streets

Unimproved streets

CRIME SCENE

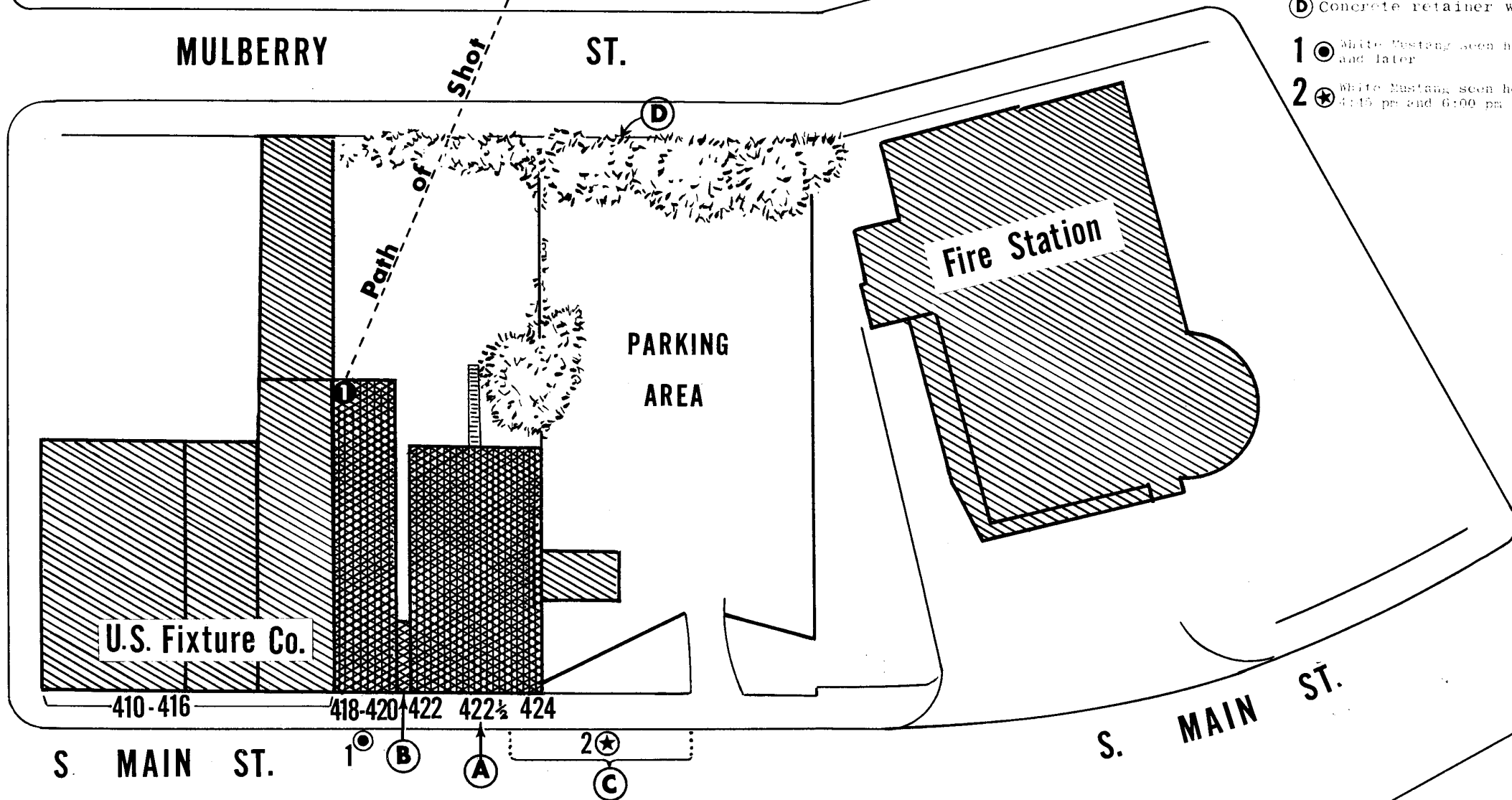
AVE.



MULBERRY

ST.

HULING



U.S. Fixture Co.

Fire Station

PARKING AREA

410-416 418-420 422 422½ 424

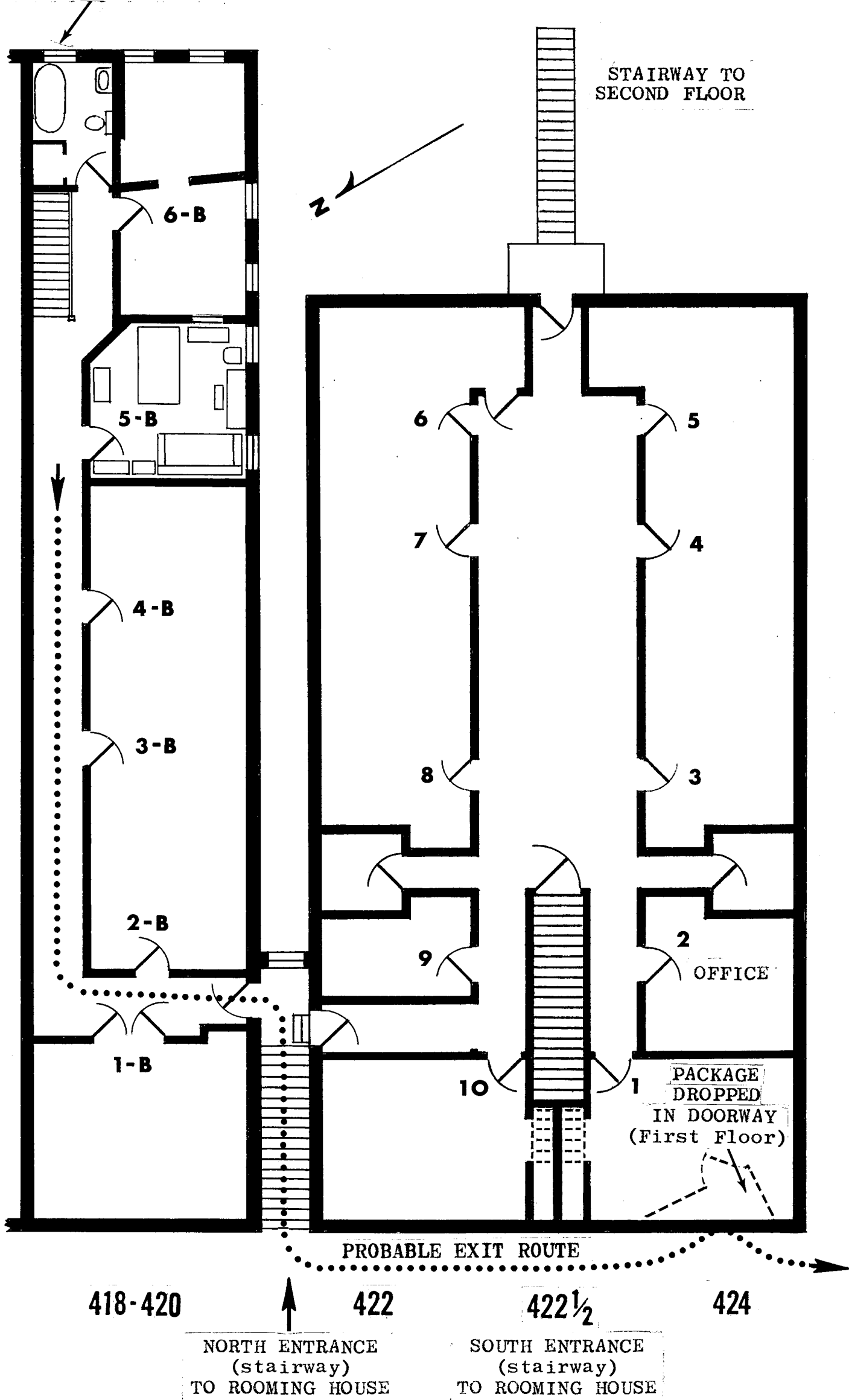
S. MAIN ST.

S. MAIN ST.

- ① Bathroom window, N. wing of rooming house
- ② Point where Dr. King was shot
424 - Canipe Amusement Co.
- Ⓐ 422½ - S. entrance (stairway) to rooming house, 2nd floor
422 - Cohn and Co.
- Ⓑ N. entrance (stairway) to rooming house, 2nd floor
420-418 - Jim's Grill
- Indicates 2nd floor area of rooming house from 418-424 with two entrances marked A and B
- Ⓒ Space for 3 cars between fire plug and driveway
- Ⓓ Concrete retainer wall
- 1 ⊙ White Mustang seen here about 1:00p and later
- 2 ⊙ White Mustang seen here between approx. 4:15 pm and 6:00 pm

SECOND FLOOR PLAN of ROOMING HOUSE

BATHROOM WINDOW
FROM WHERE
SHOT WAS FIRED



S. MAIN ST.

44-38861-1112

ROOMING HOUSE OCCUPIES
2nd FLOOR OF BOTH BUILDINGS

Apts. 2nd
floor

HULING AVE.



410 - 412 - 414 - 416
U.S. FIXTURES CO.

418-420
JIM'S
GRILL

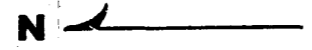
422
COHN
and CO.

422 1/2
SOUTH
ENTRANCE
(stairway)
to
ROOMING
HOUSE

424
CANIPE
AMUSEMENT
CO.

S. MAIN ST

NORTH ENTRANCE
(stairway) to
ROOMING HOUSE



COMPOSITE PHOTO of
410-424 S. MAIN ST.

44-38861-5912